

Rab5B

Catalog Number: 21037

Gene Symbol: RAB5B

Description: Anti-Rab5B Rabbit Polyclonal Antibody

Background: Rab5, consists of three isoforms, **Western blot:**

Rab5A, Rab5B, and Rab5C, is a small GTPase that is localized to early endosomes. It regulates the fusion between endocytic vesicles and early endosomes, as well as the homotypic fusion between early endosomes.

Immunogen: A synthetic peptide from Rab5B

Tested Applications: ELISA, WB, IHC

Recommended Dilutions:

ELISA 1:100-1:5000

WB 1:100-1:1000

IHC 1:100-1000

Concentration: 0.2 mg/ml

Host: Rabbit

Clonality: Polyclonal

Purity: Purified from serum

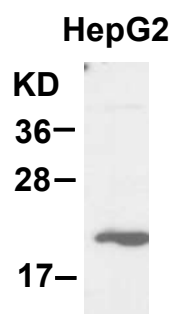
Format: Liquid

Preservative: no

Constituents: PBS (without Mg^{2+} and Ca^{2+}), pH7.4, 150 mM NaCl, 50% glycerol

Species Reactivity: Rab5B antibody recognizes Rab5B from vertebrates.

Storage Conditions: Store at -20°C. Avoid freeze / thaw cycles



WB: anti-Rab5B pAb

Western blot analysis of Rab5B proteins.

HepG2 cell lysate was used for Western blot with anti-Rab5B polyclonal antibody (Cat. # 21037).

FOR RESEARCH USE ONLY. NOT FOR DIAGNOSTIC APPLICATIONS